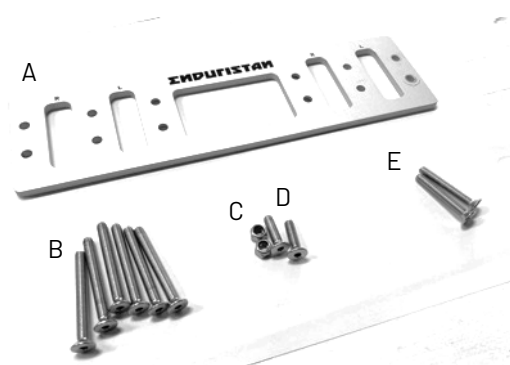


# Installation guide

## [LUSA-508] Monsoon Evo Bracket Shifter

### PACKAGE CONTENT

- A 1x bracket shifter plate
- B 6x countersunk screws M5 x 45mm
- C 2x self-locking nuts M5
- D 2x countersunk screws M5 x 25mm
- E 2x countersunk screws M5 x 35mm



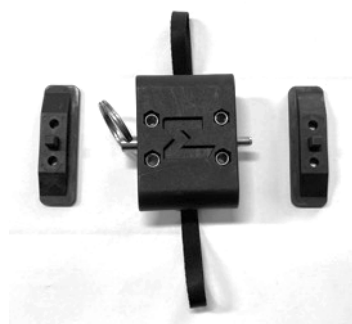
### ALSO NEEDED

- [LUSA-509] Monsoon Evo Diameter Extender (delivered with your Monsoon Evo - also available as a spare part; please contact your dealer)
- [LUSA-008] Monsoon Evo
- Allen key size 3
- Wrench size 8



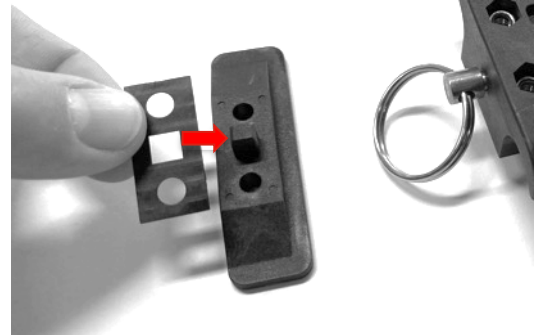
### DISMANTLING THE BRACKETS ON YOUR MONSOON BAG AND FITTING THE DIAMETER EXTENDER

1. Leave the locking pins inside the bracket.
2. Remove the 4 screws on both mounting brackets from the inside of the bag and remove the bracket and screws. Make sure the self-locking nuts do not fall out of the bracket when removing the brackets. Put the screws aside, as they are not needed anymore.
3. Remove the 2 small parts and place on a table.

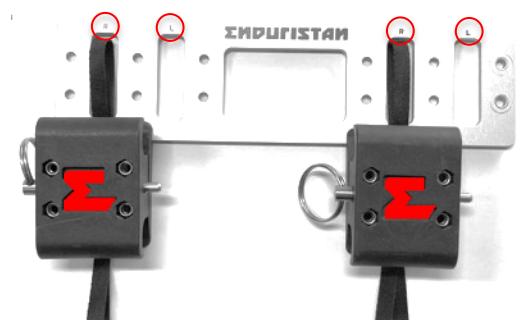


## MOUNTING THE FIRST BRACKET TO THE SHIFTER PLATE

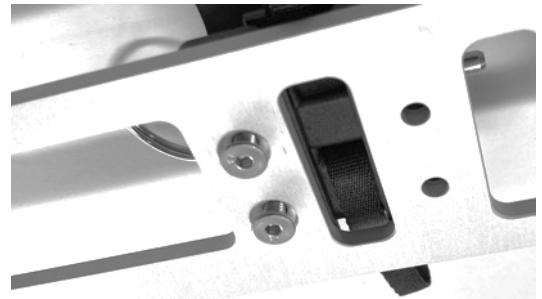
1. Place the two diameter extender pieces on the two separated small parts and re-assemble the bracket.
2. Repeat step 1 for the other bracket.



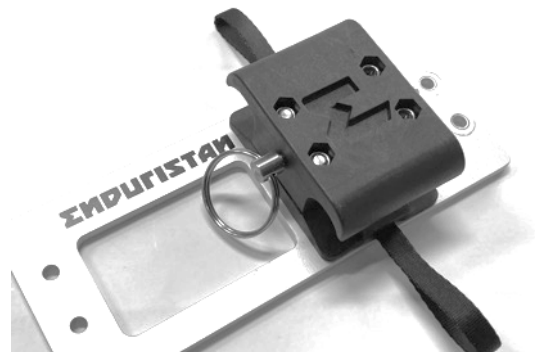
3. For the right bag (in driving direction) the brackets will be installed at the positions on the bracket shifter plate marked with "R". For the left bag use the positions marked with "L".  
Make sure the "E" on the bracket is in the correct position (longer stroke of the "E" facing down).



4. Take the 2 countersunk screws M5x 35mm and insert them from the backside into the bracket shifter plate and the bracket (this will be only possible for the bracket that is mounted further inside).

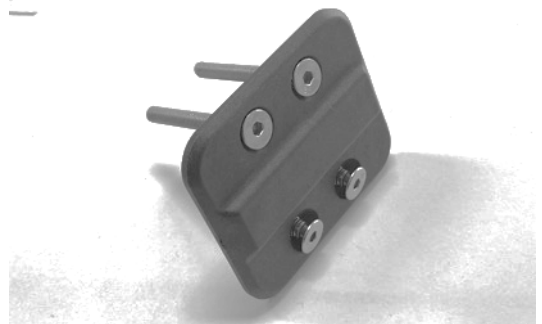


5. Align the bracket with the bracket shifter plate and make sure the pulling strap is moving freely before tightening the screws.

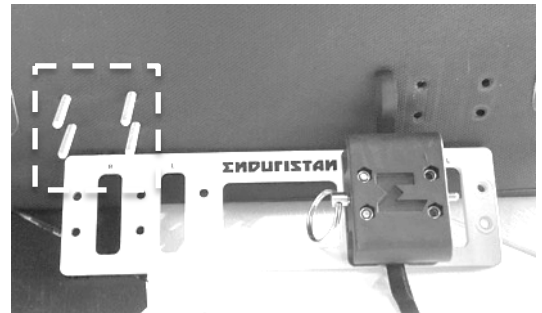


## MOUNTING THE SECOND BRACKET

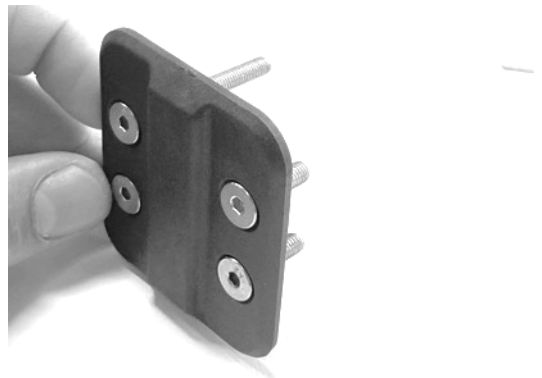
1. Take 4 countersunk screws M5 x 45mm and put them into the first counter plate.



2. On the side of the bag, where no bracket is mounted, install the first counter plate with the screws from the inside of the bag. Make sure the reinforced middle part is placed vertically.



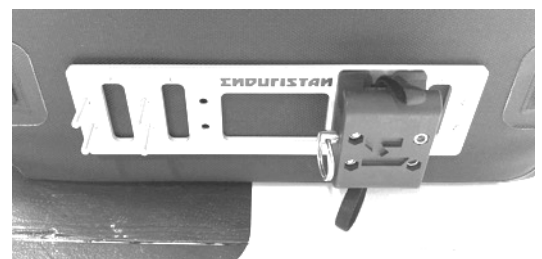
3. Take two countersunk screws M5x 25mm and place them on one side of the vertical reinforcement of the second counter plate. Take the two remaining countersunk screws M5x 45mm and insert them on the other side of the vertical reinforcement of the counter plate.



4. Take the second counter plate and install it from the inside through the bag. Make sure that the longer screws are closer to the middle of the bag.



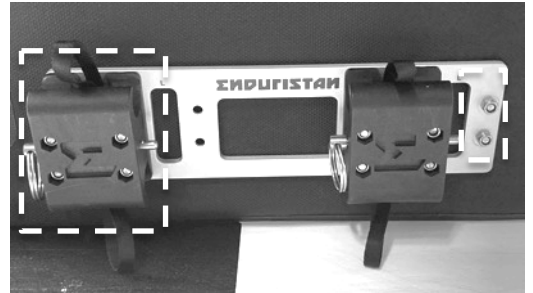
5. Place the bracket shifter plate on the screws



# ENDURISTAN

WHEREVER YOU RIDE

6. Place the 2 self-locking nuts on the short screws at the outside of the bag.
7. Place the second mounting bracket on the adapter plate. Make sure the pulling strap is not pinched between the bracket and the bracket shifter. Make sure that the Enduristan Logo has the correct orientation.
8. Tighten all the screws.



## MOUNTING THE BAG TO THE RACK: ONLY FOR THE OEM RACK OF THE BMW GS:

1. Remove the locking pins from the bracket and place the bag on the rack
2. Put the bag on the rack and pull down on the pulling strap to snap the bag to the rack.
3. While tilting the bag, insert the locking pins so they do not stick out on the other side.
4. Place the bag upright and secure it with the upper straps around the rack.
5. Push the locking pins through the bracket completely.

